

GÜHRING

德國鈷領 氣冷式 高週波燒結機 燒結刀桿

GSS
2000



產品編號：#4730 10,000

使用電源：三相 380V，使用三相 220V需搭配升壓器。

操作簡單、耐用、經濟實惠 **CP** 值最高的夾持系統



| 編號 | BT | 內孔尺寸 | 價格 | 型式 |
|---------|-------|-------|-------|-----|
| No.4739 | BT 30 | 3、4、5 | 7,100 | 標準型 |
| No.4739 | BT | 6~20 | 6,200 | 標準型 |
| No.4739 | BT40 | 3、4、5 | 7,700 | 標準型 |
| No.4739 | BT40 | 6~32 | 6,700 | 標準型 |
| No.4739 | BT40 | 6~32 | 8,100 | 加長型 |
| No.4739 | BT50 | 6~32 | 9,200 | 標準型 |

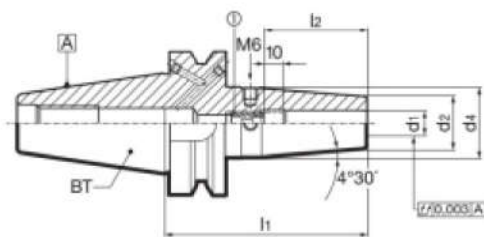
. 內孔尺寸 6-32為 6 8 10 12 14 16 18 20 25 32mm。

. 刀具柄部 h6公差夾持燒結、動平衡 G2.5 / 25,000 rpm。

. 另有HSK、SK、CAT等夾持系統及各式油壓夾持刀桿可選用。

BT30/ 40/ 50 燒結式刀桿

- MAS/BT to DIN ISO 7388-2 Form JD/JF
- BT30 JD型無側邊出水設計。
- 動平衡G 2.5 / 25,000 rpm or rev. < 1 gmm
- 刀具夾持柄徑公差必須 h6。
- axial length adjustment
- 包含動平衡調整螺紋 4xM6/6xM6。
- concentricity < 3 μ m ; l₁ from 130 mm = 4 μ m
- 特殊加長型 l₁ 接受訂製。
- 包含調整螺絲 鈔領編號 4977 或 4904。
- 拉頭 鈔領編號 4927, 4928 (需額外購買)。



鈔領編號

4739



| BT | 夾持柄徑 d1 mm h6 | d2 mm | d4 mm | l1 mm | l2 mm | ①調整螺絲 | 重量 Kg | Code no. | 價格 |
|-----|------------------|----------|----------|----------|----------|-------------|----------|----------|-------|
| 30* | 3 | 10 | 18 | 80 | 30 | 4904 5,016 | 0.6 | 3,030 | 7,100 |
| 30* | 4 | 10 | 18 | 80 | 35 | 4904 6,016 | 0.6 | 4,030 | 7,100 |
| 30* | 5 | 10 | 18 | 80 | 40 | 4904 8,018 | 0.6 | 5,030 | 7,100 |
| 30* | 6 | 21 | 27 | 80 | 36 | 4977 6,014 | 0.7 | 6,030 | 6,200 |
| 30* | 8 | 21 | 27 | 80 | 36 | 4977 8,014 | 0.7 | 8,030 | 6,200 |
| 30* | 10 | 24 | 32 | 80 | 41 | 4977 10,014 | 0.8 | 10,030 | 6,200 |
| 30* | 12 | 24 | 32 | 80 | 46 | 4977 12,014 | 0.8 | 12,030 | 6,200 |
| 30* | 14 | 27 | 34 | 80 | 46 | 4977 12,014 | 0.8 | 14,030 | 6,200 |
| 30* | 16 | 27 | 34 | 80 | 49 | 4977 16,014 | 0.8 | 16,030 | 6,200 |
| 30* | 18 | 33 | 42 | 90 | 49 | 4977 16,014 | 0.9 | 18,030 | 6,200 |
| 30* | 20 | 33 | 42 | 90 | 51 | 4977 20,114 | 0.9 | 20,030 | 6,200 |
| 40 | 3 | 10 | 18 | 85 | 30 | 4904 5,016 | 1.0 | 3,040 | 7,700 |
| 40 | 4 | 10 | 18 | 85 | 35 | 4904 6,016 | 1.0 | 4,040 | 7,700 |
| 40 | 5 | 10 | 18 | 85 | 40 | 4904 8,018 | 1.0 | 5,040 | 7,700 |
| 40 | 6 | 21 | 27 | 90 | 36 | 4977 6,014 | 1.2 | 6,040 | 6,700 |
| 40 | 8 | 21 | 27 | 90 | 36 | 4977 8,014 | 1.2 | 8,040 | 6,700 |
| 40 | 10 | 24 | 32 | 90 | 41 | 4977 10,014 | 1.3 | 10,040 | 6,700 |
| 40 | 12 | 24 | 32 | 90 | 46 | 4977 12,014 | 1.3 | 12,040 | 6,700 |
| 40 | 14 | 27 | 34 | 90 | 46 | 4977 12,014 | 1.4 | 14,040 | 6,700 |
| 40 | 16 | 27 | 34 | 90 | 49 | 4977 16,014 | 1.4 | 16,040 | 6,700 |
| 40 | 18 | 33 | 42 | 90 | 49 | 4977 16,014 | 1.7 | 18,040 | 6,700 |
| 40 | 20 | 33 | 42 | 90 | 51 | 4977 20,114 | 1.7 | 20,040 | 6,700 |
| 40 | 25 | 44 | 53 | 100 | 57 | 4977 20,114 | 1.8 | 25,040 | 6,700 |
| 40 | 32 | 44 | 53 | 100 | 61 | 4977 20,114 | 1.8 | 32,040 | 6,700 |
| 40 | 6 | 21 | 27 | 130 | 36 | 4977 6,014 | 1.3 | 6,140 | 8,100 |
| 40 | 8 | 24 | 32 | 130 | 41 | 4977 8,014 | 1.3 | 8,140 | 8,100 |
| 40 | 10 | 24 | 32 | 130 | 46 | 4977 10,014 | 1.4 | 10,140 | 8,100 |
| 40 | 12 | 27 | 34 | 130 | 46 | 4977 12,014 | 1.4 | 12,140 | 8,100 |
| 40 | 14 | 27 | 34 | 130 | 49 | 4977 12,014 | 1.4 | 14,140 | 8,100 |
| 40 | 16 | 33 | 42 | 130 | 49 | 4977 16,014 | 1.5 | 16,140 | 8,100 |
| 40 | 18 | 33 | 42 | 130 | 51 | 4977 16,014 | 1.5 | 18,140 | 8,100 |
| 40 | 20 | 44 | 53 | 130 | 57 | 4977 20,114 | 1.8 | 20,140 | 8,100 |
| 40 | 25 | 44 | 53 | 130 | 58 | 4977 20,114 | 2.0 | 25,140 | 8,100 |
| 40 | 32 | 44 | 53 | 130 | 61 | 4977 20,114 | 1.9 | 32,140 | 8,100 |
| 50 | 6 | 21 | 27 | 100 | 36 | 4977 6,014 | 2.9 | 6,050 | 9,200 |
| 50 | 8 | 21 | 27 | 100 | 36 | 4977 8,014 | 2.9 | 8,050 | 9,200 |
| 50 | 10 | 24 | 32 | 100 | 41 | 4977 10,014 | 2.9 | 10,050 | 9,200 |
| 50 | 12 | 24 | 32 | 100 | 46 | 4977 12,014 | 2.9 | 12,050 | 9,200 |
| 50 | 14 | 27 | 34 | 100 | 46 | 4977 12,014 | 3.0 | 14,050 | 9,200 |
| 50 | 16 | 27 | 34 | 100 | 49 | 4977 16,014 | 3.0 | 16,050 | 9,200 |
| 50 | 18 | 33 | 42 | 100 | 49 | 4977 16,014 | 1.9 | 18,050 | 9,200 |
| 50 | 20 | 33 | 42 | 100 | 51 | 4977 20,114 | 1.9 | 20,050 | 9,200 |
| 50 | 25 | 44 | 53 | 110 | 57 | 4977 20,114 | 2.2 | 25,050 | 9,200 |
| 50 | 32 | 44 | 53 | 110 | 61 | 4977 20,114 | 2.2 | 32,050 | 9,200 |

另有 HSK 系列可以選用，在 30-32 頁

HSK-A 燒結刀桿 底端出水型

HSK-A shrink fit chucks GÜHROJET with peripheral cooling

A12



GÜHROJET

Product information:

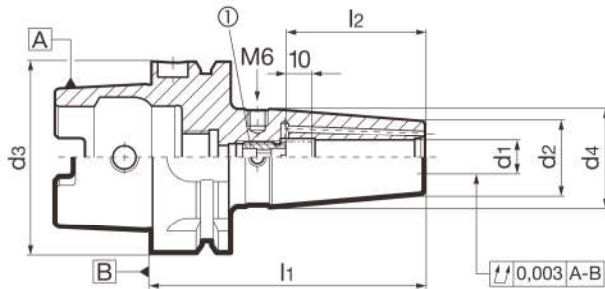
- HSK-A according to ISO 12164-1 / DIN 69893-1
- dimensions according to DIN 69882-8
- balancing quality: G 2.5 / 25,000 rpm or rev. < 1 gmm
- for tool shanks d1 h6
- axial length adjustment
- concentricity < 3 µm
- l1 from 120 mm: = 4 µm
- balancing thread 4xM6/6xM6
- optimised cooling lubrication for tools without internal coolant
- good chip evacuation and increased process reliability
- coolant ducts: d1 = 6 - 10 mm with two coolant ducts, d1 = 12 - 32 mm with four coolant ducts

Scope of delivery:

- incl. adjusting screw (1) art. no. 4938

suitable accessories separately available:

- coolant supply set art. no. 4949
- replacement adjusting screw (1), art. no. 4938



HSK-A 燒結刀桿 底端出水型



| | |
|-------------|------|
| Article no. | 4755 |
|-------------|------|

| d3 | d1 mm | d2 mm | d4 mm | l1 mm | l2 mm | ① | kg | Order no. | 價格 |
|-----------|-------|-------|-------|-------|-------|-------------|-----|--------------|--------|
| HSK-A 40 | 6 | 21 | 27.0 | 80 | 36 | 4938 6.000 | 0.5 | 4755 6.040 | 9,100 |
| HSK-A 40 | 8 | 21 | 27.0 | 80 | 36 | 4938 8.000 | 0.5 | 4755 8.040 | 9,100 |
| HSK-A 40 | 10 | 24 | 32.0 | 80 | 41 | 4938 10.000 | 0.5 | 4755 10.040 | 9,100 |
| HSK-A 40 | 12 | 24 | 32.0 | 90 | 46 | 4938 12.000 | 0.5 | 4755 12.040 | 9,100 |
| HSK-A 40 | 14 | 27 | 33.5 | 90 | 46 | 4938 12.000 | 0.5 | 4755 14.040 | 9,100 |
| HSK-A 40 | 16 | 27 | 33.5 | 90 | 49 | 4938 16.000 | 0.5 | 4755 16.040 | 9,100 |
| HSK-A 50 | 6 | 21 | 27.0 | 80 | 36 | 4938 6.000 | 0.6 | 4755 6.050 | 9,100 |
| HSK-A 50 | 8 | 21 | 27.0 | 80 | 36 | 4938 8.000 | 0.6 | 4755 8.050 | 9,100 |
| HSK-A 50 | 10 | 24 | 32.0 | 85 | 41 | 4938 10.000 | 0.6 | 4755 10.050 | 9,100 |
| HSK-A 50 | 12 | 24 | 32.0 | 90 | 46 | 4938 12.000 | 0.7 | 4755 12.050 | 9,100 |
| HSK-A 50 | 14 | 27 | 34.0 | 90 | 46 | 4938 12.000 | 0.7 | 4755 14.050 | 9,100 |
| HSK-A 50 | 16 | 27 | 34.0 | 95 | 49 | 4938 16.000 | 0.7 | 4755 16.050 | 9,100 |
| HSK-A 50 | 18 | 33 | 41.5 | 95 | 49 | 4938 16.000 | 0.9 | 4755 18.050 | 9,100 |
| HSK-A 50 | 20 | 33 | 41.5 | 100 | 51 | 4938 20.000 | 0.9 | 4755 20.050 | 9,100 |
| HSK-A 63 | 6 | 21 | 27.0 | 80 | 36 | 4938 6.000 | 0.8 | 4755 6.063 | 9,100 |
| HSK-A 63 | 8 | 21 | 27.0 | 80 | 36 | 4938 8.000 | 0.8 | 4755 8.063 | 9,100 |
| HSK-A 63 | 10 | 24 | 32.0 | 85 | 41 | 4938 10.000 | 0.9 | 4755 10.063 | 9,100 |
| HSK-A 63 | 12 | 24 | 32.0 | 90 | 46 | 4938 12.000 | 0.9 | 4755 12.063 | 9,100 |
| HSK-A 63 | 14 | 27 | 34.0 | 90 | 46 | 4938 12.000 | 1.0 | 4755 14.063 | 9,100 |
| HSK-A 63 | 16 | 27 | 34.0 | 95 | 49 | 4938 16.000 | 1.0 | 4755 16.063 | 9,100 |
| HSK-A 63 | 18 | 33 | 42.0 | 95 | 49 | 4938 16.000 | 1.2 | 4755 18.063 | 9,100 |
| HSK-A 63 | 20 | 33 | 42.0 | 100 | 51 | 4938 20.000 | 1.2 | 4755 20.063 | 9,100 |
| HSK-A 63 | 6 | 21 | 27.0 | 120 | 36 | 4938 6.000 | 0.9 | 4755 206.063 | 10,800 |
| HSK-A 63 | 8 | 21 | 27.0 | 120 | 36 | 4938 8.000 | 1.0 | 4755 208.063 | 10,800 |
| HSK-A 63 | 10 | 24 | 32.0 | 120 | 41 | 4938 10.000 | 1.1 | 4755 210.063 | 10,800 |
| HSK-A 63 | 12 | 24 | 32.0 | 120 | 46 | 4938 12.000 | 1.2 | 4755 212.063 | 10,800 |
| HSK-A 63 | 14 | 27 | 34.0 | 120 | 46 | 4938 12.000 | 1.2 | 4755 214.063 | 10,800 |
| HSK-A 63 | 16 | 27 | 34.0 | 120 | 49 | 4938 16.000 | 1.1 | 4755 216.063 | 10,800 |
| HSK-A 63 | 18 | 33 | 42.0 | 120 | 49 | 4938 16.000 | 1.2 | 4755 218.063 | 10,800 |
| HSK-A 63 | 20 | 33 | 42.0 | 120 | 51 | 4938 20.000 | 1.4 | 4755 220.063 | 10,800 |
| HSK-A 100 | 6 | 21 | 27.0 | 85 | 36 | 4938 6.000 | 2.2 | 4755 6.100 | 11,900 |
| HSK-A 100 | 8 | 21 | 27.0 | 85 | 36 | 4938 8.000 | 2.2 | 4755 8.100 | 11,900 |
| HSK-A 100 | 10 | 24 | 32.0 | 90 | 41 | 4938 10.000 | 2.3 | 4755 10.100 | 11,900 |
| HSK-A 100 | 12 | 24 | 32.0 | 95 | 46 | 4938 12.000 | 2.3 | 4755 12.100 | 11,900 |
| HSK-A 100 | 14 | 27 | 34.0 | 95 | 46 | 4938 12.000 | 2.3 | 4755 14.100 | 11,900 |
| HSK-A 100 | 16 | 27 | 34.0 | 100 | 49 | 4938 16.000 | 2.3 | 4755 16.100 | 11,900 |
| HSK-A 100 | 18 | 33 | 42.0 | 100 | 49 | 4938 16.000 | 2.5 | 4755 18.100 | 11,900 |
| HSK-A 100 | 20 | 33 | 42.0 | 105 | 51 | 4938 20.000 | 2.5 | 4755 20.100 | 11,900 |
| HSK-A 100 | 25 | 44 | 53.0 | 115 | 57 | 4938 20.000 | 3.0 | 4755 25.100 | 11,900 |
| HSK-A 100 | 32 | 44 | 53.0 | 120 | 61 | 4938 20.000 | 3.0 | 4755 32.100 | 11,900 |

HSK-A 63、3° 細頸燒結刀桿

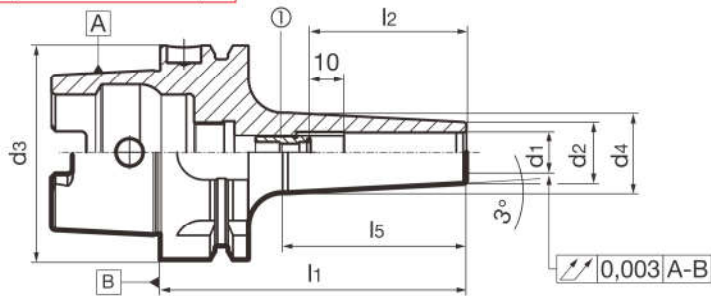
HSK-A shrink fit chucks, slim design 3°



Product information:

- HSK-A according to ISO 12164-1 / DIN 69893-1
- balancing quality: G 2.5 / 25,000 rpm or rev. < 1 gmm
- for carbide tool shanks in tolerance h6 (from d1 14 mm also HSS possible)
- axial length adjustment

- Concentricity < 3 μm
l1 up to 120 mm: max. 4 μm
l1 up to 160 mm: max. 5 μm



Scope of delivery:

- incl. adjusting screw (1) with axial force damping art. no. 4941 or 4904

suitable accessories separately available:

- coolant supply set art. no. 4949
- replacement adjusting screw with axial force damping (1), art. no. 4941 or 4904
- MQL version available on request

HSK-A 63、3° 細頸燒結刀桿



| | | | | | | | | | Article no. | 4787 | |
|----------|-------|-------|-------|-------|-------|-------|-------------|-----|-------------|--------|--|
| d3 | d1 mm | d2 mm | d4 mm | l1 mm | l2 mm | l5 mm | ① | kg | Order no. | 價格 | |
| HSK-A 63 | 3 | 9 | 13.0 | 80 | 30 | 40 | 4904 5.016 | 0.6 | 4787 3.063 | 9,500 | |
| HSK-A 63 | 4 | 10 | 14.0 | 80 | 35 | 41 | 4904 6.016 | 0.7 | 4787 4.063 | 9,500 | |
| HSK-A 63 | 5 | 11 | 15.0 | 80 | 40 | 41 | 4904 8.018 | 0.7 | 4787 5.063 | 9,500 | |
| HSK-A 63 | 6 | 12 | 16.0 | 80 | 36 | 42 | 4941 6.100 | 0.7 | 4787 6.063 | 8,200 | |
| HSK-A 63 | 8 | 14 | 18.0 | 80 | 36 | 42 | 4941 8.100 | 0.7 | 4787 8.063 | 8,200 | |
| HSK-A 63 | 10 | 16 | 21.0 | 85 | 41 | 49 | 4941 10.100 | 0.7 | 4787 10.063 | 8,200 | |
| HSK-A 63 | 12 | 18 | 23.5 | 90 | 46 | 54 | 4941 12.100 | 0.7 | 4787 12.063 | 8,200 | |
| HSK-A 63 | 14 | 20 | 25.5 | 90 | 46 | 54 | 4941 14.100 | 0.7 | 4787 14.063 | 8,200 | |
| HSK-A 63 | 16 | 22 | 28.0 | 95 | 49 | 59 | 4941 16.100 | 0.8 | 4787 16.063 | 8,200 | |
| HSK-A 63 | 18 | 24 | 30.0 | 95 | 49 | 59 | 4941 18.100 | 0.8 | 4787 18.063 | 8,200 | |
| HSK-A 63 | 20 | 26 | 32.5 | 100 | 51 | 64 | 4941 20.100 | 0.9 | 4787 20.063 | 8,200 | |
| HSK-A 63 | 3 | 9 | 17.0 | 120 | 30 | 80 | 4904 5.016 | 0.7 | 4787 3.163 | 9,600 | |
| HSK-A 63 | 4 | 10 | 18.0 | 120 | 35 | 81 | 4904 6.016 | 0.7 | 4787 4.163 | 9,600 | |
| HSK-A 63 | 5 | 11 | 19.0 | 120 | 40 | 81 | 4904 8.018 | 0.7 | 4787 5.163 | 9,600 | |
| HSK-A 63 | 6 | 12 | 20.5 | 120 | 36 | 82 | 4941 6.041 | 0.8 | 4787 6.163 | 9,600 | |
| HSK-A 63 | 8 | 14 | 22.5 | 120 | 36 | 82 | 4941 8.040 | 0.8 | 4787 8.163 | 9,600 | |
| HSK-A 63 | 10 | 16 | 24.5 | 120 | 41 | 82 | 4941 10.050 | 0.8 | 4787 10.163 | 9,600 | |
| HSK-A 63 | 12 | 18 | 26.5 | 120 | 46 | 83 | 4941 12.100 | 0.9 | 4787 12.163 | 9,600 | |
| HSK-A 63 | 14 | 20 | 28.5 | 120 | 46 | 83 | 4941 14.100 | 0.9 | 4787 14.163 | 9,600 | |
| HSK-A 63 | 16 | 22 | 30.5 | 120 | 49 | 83 | 4941 16.100 | 0.9 | 4787 16.163 | 9,600 | |
| HSK-A 63 | 18 | 24 | 32.7 | 120 | 49 | 84 | 4941 18.100 | 1.0 | 4787 18.163 | 9,600 | |
| HSK-A 63 | 20 | 26 | 34.7 | 120 | 51 | 85 | 4941 20.100 | 1.0 | 4787 20.163 | 9,600 | |
| HSK-A 63 | 3 | 9 | 21.5 | 160 | 30 | 121 | 4904 5.016 | 0.8 | 4787 3.263 | 12,100 | |
| HSK-A 63 | 4 | 10 | 22.5 | 160 | 35 | 121 | 4904 6.016 | 0.8 | 4787 4.263 | 12,100 | |
| HSK-A 63 | 5 | 11 | 23.5 | 160 | 40 | 121 | 4904 8.018 | 0.9 | 4787 5.263 | 12,100 | |
| HSK-A 63 | 6 | 12 | 24.5 | 160 | 36 | 122 | 4941 6.041 | 0.9 | 4787 6.263 | 12,100 | |
| HSK-A 63 | 8 | 14 | 26.5 | 160 | 36 | 122 | 4941 8.040 | 1.0 | 4787 8.263 | 12,100 | |
| HSK-A 63 | 10 | 16 | 28.5 | 160 | 41 | 122 | 4941 10.050 | 1.0 | 4787 10.263 | 12,100 | |
| HSK-A 63 | 12 | 18 | 30.5 | 160 | 46 | 123 | 4941 12.100 | 1.1 | 4787 12.263 | 12,100 | |
| HSK-A 63 | 14 | 20 | 32.8 | 160 | 46 | 124 | 4941 14.100 | 1.1 | 4787 14.263 | 12,100 | |
| HSK-A 63 | 16 | 22 | 34.8 | 160 | 49 | 125 | 4941 16.100 | 1.2 | 4787 16.263 | 12,100 | |
| HSK-A 63 | 18 | 24 | 37.0 | 160 | 49 | 126 | 4941 18.100 | 1.3 | 4787 18.263 | 12,100 | |
| HSK-A 63 | 20 | 26 | 39.0 | 160 | 51 | 127 | 4941 20.100 | 1.3 | 4787 20.263 | 12,100 | |

HSK-E 燒結刀桿

A14

HSK-E shrink fit chucks



Product information:

- HSK-E according to DIN 69893-5 with access hole in taper for manual tool change
- balancing quality: G 2.5 / 25,000 rpm or rev. < 1 gmm
- for tool shanks d1 h6
- axial length adjustment
- concentricity < 3 μm

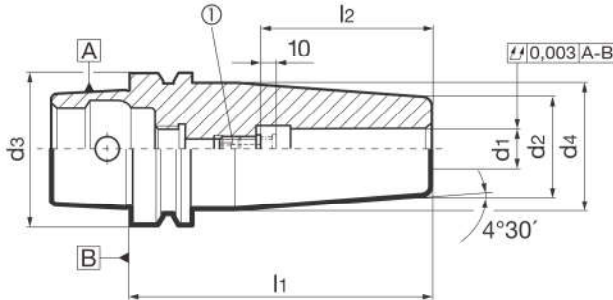
Scope of delivery:

- incl. adjusting screw (1) art. no. 4977 or 4904

suitable accessories separately available:

- coolant supply set art. no. 4949
- replacement adjusting screw (1), art. no. 4977 or 4904

HSK-E 全圓無缺口型 燒結刀桿 高速加工機使用
高速加工機例如：Roku Roku、YASDA



| | | | | | | | | Article no. | 4737 | |
|----------|----------|----------|----------|----------|----------|-------------|-----|-------------|--------|--|
| d3 | d1 mm | d2 mm | d4 mm | l1 mm | l2 mm | ① | kg | Order no. | 價格 | |
| HSK-E 32 | 3 | 10 | 15.9 | 60 | | | 0.1 | 4737 3.032 | 9,600 | |
| HSK-E 32 | 4 | 10 | 15.9 | 60 | | | 0.1 | 4737 4.032 | 9,600 | |
| HSK-E 32 | 5 | 10 | 15.9 | 60 | | | 0.1 | 4737 5.032 | 9,600 | |
| HSK-E 32 | 6 | 21 | 26.0 | 70 | 36 | 4977 6.014 | 0.1 | 4737 6.032 | 9,600 | |
| HSK-E 32 | 8 | 21 | 26.0 | 70 | 36 | 4977 8.014 | 0.2 | 4737 8.032 | 9,600 | |
| HSK-E 32 | 10 | 24 | 29.0 | 75 | 41 | 4977 10.014 | 0.2 | 4737 10.032 | 9,600 | |
| HSK-E 32 | 12 | 24 | 29.0 | 80 | 46 | 4977 12.014 | 0.2 | 4737 12.032 | 9,600 | |
| HSK-E 40 | 3 | 10 | 19.0 | 80 | | | 0.2 | 4737 3.040 | 9,500 | |
| HSK-E 40 | 4 | 10 | 19.0 | 80 | | | 0.2 | 4737 4.040 | 9,500 | |
| HSK-E 40 | 5 | 10 | 19.0 | 80 | | | 0.2 | 4737 5.040 | 9,500 | |
| HSK-E 40 | 6 | 21 | 27.0 | 80 | 36 | 4977 6.014 | 0.4 | 4737 6.040 | 9,500 | |
| HSK-E 40 | 8 | 21 | 27.0 | 80 | 36 | 4977 8.014 | 0.4 | 4737 8.040 | 9,500 | |
| HSK-E 40 | 10 | 24 | 32.0 | 80 | 41 | 4977 10.014 | 0.4 | 4737 10.040 | 9,500 | |
| HSK-E 40 | 12 | 24 | 32.0 | 90 | 46 | 4977 12.014 | 0.5 | 4737 12.040 | 9,500 | |
| HSK-E 40 | 14 | 27 | 34.0 | 90 | 46 | 4977 12.014 | 0.5 | 4737 14.040 | 9,500 | |
| HSK-E 40 | 16 | 27 | 34.0 | 90 | 49 | 4977 16.014 | 0.5 | 4737 16.040 | 9,500 | |
| HSK-E 50 | 3 | 10 | 18.0 | 80 | 30 | 4904 5.016 | 0.4 | 4737 3.050 | 9,800 | |
| HSK-E 50 | 4 | 10 | 18.0 | 80 | 35 | 4904 6.016 | 0.4 | 4737 4.050 | 9,800 | |
| HSK-E 50 | 5 | 10 | 18.0 | 80 | | | 0.4 | 4737 5.050 | 9,800 | |
| HSK-E 50 | 6 | 21 | 27.0 | 80 | 36 | 4977 6.014 | 0.5 | 4737 6.050 | 9,800 | |
| HSK-E 50 | 8 | 21 | 27.0 | 80 | 36 | 4977 8.014 | 0.5 | 4737 8.050 | 9,800 | |
| HSK-E 50 | 10 | 24 | 32.0 | 85 | 41 | 4977 10.014 | 0.5 | 4737 10.050 | 9,800 | |
| HSK-E 50 | 12 | 24 | 32.0 | 90 | 46 | 4977 12.014 | 0.6 | 4737 12.050 | 9,800 | |
| HSK-E 50 | 14 | 27 | 34.0 | 90 | 46 | 4977 12.014 | 0.7 | 4737 14.050 | 9,800 | |
| HSK-E 50 | 16 | 27 | 34.0 | 95 | 49 | 4977 16.014 | 0.7 | 4737 16.050 | 9,800 | |
| HSK-E 50 | 18 | 33 | 42.0 | 95 | 49 | 4977 16.014 | 0.9 | 4737 18.050 | 9,800 | |
| HSK-E 50 | 20 | 33 | 42.0 | 100 | 51 | 4977 20.114 | 0.9 | 4737 20.050 | 9,800 | |
| HSK-E 63 | 6 | 21 | 27.0 | 80 | 36 | 4977 6.014 | 0.8 | 4737 6.063 | 10,200 | |
| HSK-E 63 | 8 | 21 | 27.0 | 80 | 36 | 4977 8.014 | 0.8 | 4737 8.063 | 10,200 | |
| HSK-E 63 | 10 | 24 | 32.0 | 85 | 41 | 4977 10.014 | 0.9 | 4737 10.063 | 10,200 | |
| HSK-E 63 | 12 | 24 | 32.0 | 90 | 46 | 4977 12.014 | 0.9 | 4737 12.063 | 10,200 | |
| HSK-E 63 | 14 | 27 | 34.0 | 90 | 46 | 4977 12.014 | 1.0 | 4737 14.063 | 10,200 | |
| HSK-E 63 | 16 | 27 | 34.0 | 95 | 49 | 4977 16.014 | 1.0 | 4737 16.063 | 10,200 | |
| HSK-E 63 | 18 | 33 | 42.0 | 95 | 49 | 4977 16.014 | 1.1 | 4737 18.063 | 10,200 | |
| HSK-E 63 | 20 | 33 | 42.0 | 100 | 51 | 4977 20.114 | 1.2 | 4737 20.063 | 10,200 | |
| HSK-E 63 | 25 | 44 | 53.0 | 115 | 57 | 4977 20.114 | 1.8 | 4737 25.063 | 10,200 | |
| HSK-E 63 | 32 | 44 | 53.0 | 120 | 61 | 4977 20.114 | 1.7 | 4737 32.063 | 10,200 | |

HSK-E 40/50、3° 細頸燒結刀桿

HSK-E shrink fit chucks, slim design 3°



Product information:

- HSK-E according to DIN 69893-5 with access hole in taper for manual tool change
- balancing quality: G 2.5 / 25,000 rpm or rev. < 1 gmm
- for carbide tool shanks in tolerance h6 (from d1 14 mm also HSS possible)
- axial length adjustment
- concentricity < 3 μm

Scope of delivery:

- incl. adjusting screw (1) art. no. 4904 or 4977

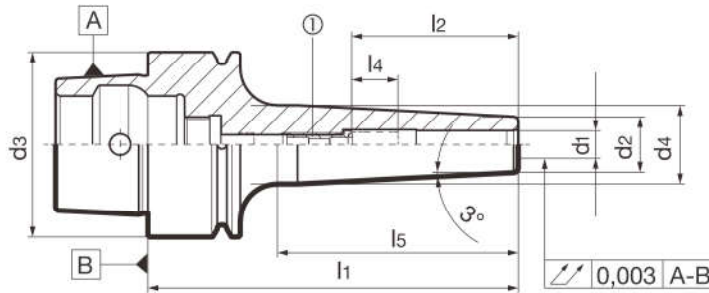
suitable accessories separately available:

- coolant supply set art. no. 4949
- replacement adjusting screw (1), art. no. 4904 or 4977

HSK-E 40/50 全圓無缺口型

3° 細頸燒結刀桿 高速加工機使用

高速加工機例如：Roku Roku、YASDA



| | | | | | | | | | | Article no. | 4789 | |
|----------|----|----|------|----|----|----|------|-------------|-----|-------------|--------|--|
| d3 | d1 | d2 | d4 | l1 | l2 | l4 | l5 | ① | kg | Order no. | 價格 | |
| HSK-E 40 | 3 | 9 | 12.0 | 60 | 30 | 10 | 30.0 | 4904 5.007 | 0.2 | 4789 3.040 | 9,500 | |
| HSK-E 40 | 4 | 10 | 13.0 | 60 | 35 | 10 | 31.0 | 4904 5.007 | 0.2 | 4789 4.040 | 9,500 | |
| HSK-E 40 | 5 | 11 | 14.0 | 60 | 36 | 10 | 31.0 | 4904 6.007 | 0.2 | 4789 5.040 | 9,500 | |
| HSK-E 40 | 6 | 12 | 15.0 | 60 | 36 | 5 | 32.0 | 4977 5.009 | 0.2 | 4789 6.040 | 9,500 | |
| HSK-E 40 | 8 | 14 | 17.0 | 60 | 36 | 5 | 32.0 | 4977 5.009 | 0.2 | 4789 8.040 | 9,500 | |
| HSK-E 40 | 10 | 16 | 19.5 | 60 | 38 | 5 | 34.0 | 4904 5.007 | 0.2 | 4789 10.040 | 9,500 | |
| HSK-E 40 | 12 | 18 | 21.5 | 60 | 40 | 3 | 34.5 | 4904 5.005 | 0.2 | 4789 12.040 | 9,500 | |
| HSK-E 40 | 3 | 9 | 14.0 | 80 | 30 | 10 | 50.0 | 4904 5.016 | 0.2 | 4789 3.140 | 10,000 | |
| HSK-E 40 | 4 | 10 | 15.0 | 80 | 35 | 10 | 51.0 | 4904 5.016 | 0.2 | 4789 4.140 | 10,000 | |
| HSK-E 40 | 5 | 11 | 16.0 | 80 | 40 | 10 | 51.0 | 4904 6.016 | 0.2 | 4789 5.140 | 10,000 | |
| HSK-E 40 | 6 | 12 | 17.0 | 80 | 36 | 10 | 52.0 | 4977 6.014 | 0.2 | 4789 6.140 | 10,000 | |
| HSK-E 40 | 8 | 14 | 19.0 | 80 | 36 | 10 | 52.5 | 4977 8.014 | 0.8 | 4789 8.140 | 10,000 | |
| HSK-E 40 | 10 | 16 | 21.5 | 80 | 41 | 10 | 54.0 | 4977 10.014 | 0.3 | 4789 10.140 | 10,000 | |
| HSK-E 40 | 12 | 18 | 23.5 | 80 | 46 | 10 | 55.0 | 4977 8.014 | 0.3 | 4789 12.140 | 10,000 | |
| HSK-E 50 | 3 | 9 | 13.0 | 80 | 30 | 10 | 40.0 | 4904 5.016 | 0.4 | 4789 3.050 | 10,300 | |
| HSK-E 50 | 4 | 10 | 14.0 | 80 | 35 | 10 | 41.0 | 4904 6.016 | 0.4 | 4789 4.050 | 10,300 | |
| HSK-E 50 | 5 | 11 | 15.0 | 80 | 40 | 10 | 41.0 | 4904 6.016 | 0.4 | 4789 5.050 | 10,300 | |
| HSK-E 50 | 6 | 12 | 16.0 | 80 | 36 | 10 | 42.0 | 4977 6.014 | 0.4 | 4789 6.050 | 10,300 | |
| HSK-E 50 | 8 | 14 | 18.0 | 80 | 36 | 10 | 42.0 | 4977 8.014 | 0.5 | 4789 8.050 | 10,300 | |
| HSK-E 50 | 10 | 16 | 20.5 | 80 | 41 | 10 | 44.0 | 4977 10.014 | 0.5 | 4789 10.050 | 10,300 | |
| HSK-E 50 | 12 | 18 | 22.5 | 80 | 46 | 10 | 44.5 | 4977 8.014 | 0.5 | 4789 12.050 | 10,300 | |
| HSK-E 50 | 14 | 20 | 24.5 | 80 | 46 | 10 | 45.5 | 4977 8.014 | 0.5 | 4789 14.050 | 10,300 | |
| HSK-E 50 | 16 | 22 | 26.5 | 80 | 49 | 10 | 46.5 | 4977 8.014 | 0.5 | 4789 16.050 | 10,300 | |

BT30 DC 兩面拘束 燒結式刀桿

MAS/BT DC shrink fit chucks with axial plane



Product information:

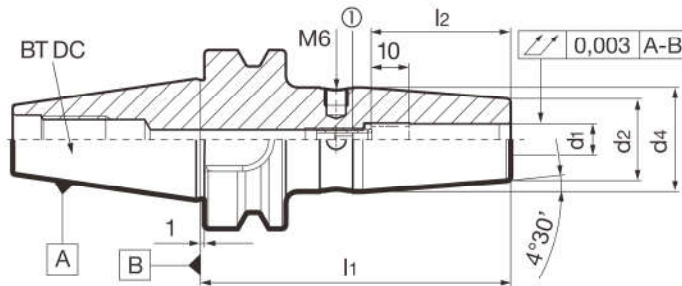
- MAS/BT DC with axial plane, sim. ISO 7388-2, form JD
- balancing quality: G 2.5/25,000 rpm or rev. < 1 gmm
- for tool shanks d1 h6
- axial length adjustment
- concentricity < 3 μm
- balancing thread 4xM6

Scope of delivery:

- incl. adjusting screw (1) art. no. 4904 or 4977

suitable accessories separately available:

- BT pull studs art. nr. 4927, 4928
- replacement adjusting screw (1), art. no. 4904 or 4977



BT30 DC 兩面拘束 燒結式刀桿
一般 BT30 機台也可以使用

| Article no. 4790 | | | | | | | | Order no. | 價格 |
|-------------------------|-------|-------|-------|-------|-------|-------------|-----|-------------|-------|
| BTDC | d1 mm | d2 mm | d4 mm | l1 mm | l2 mm | ① | kg | | |
| BT 30 | 3 | 10 | 18 | 80 | 30 | 4904 5.016 | 0.6 | 4790 3.030 | 9,900 |
| BT 30 | 4 | 10 | 18 | 80 | 35 | 4904 6.016 | 0.6 | 4790 4.030 | 9,900 |
| BT 30 | 5 | 10 | 18 | 80 | 40 | 4904 8.018 | 0.6 | 4790 5.030 | 9,900 |
| BT 30 | 6 | 21 | 27 | 80 | 36 | 4977 6.014 | 0.7 | 4790 6.030 | 8,600 |
| BT 30 | 8 | 21 | 27 | 80 | 36 | 4977 8.014 | 0.7 | 4790 8.030 | 8,600 |
| BT 30 | 10 | 24 | 32 | 80 | 41 | 4977 10.014 | 0.8 | 4790 10.030 | 8,600 |
| BT 30 | 12 | 24 | 32 | 80 | 46 | 4977 12.014 | 0.8 | 4790 12.030 | 8,600 |
| BT 30 | 14 | 27 | 34 | 80 | 46 | 4977 12.014 | 0.8 | 4790 14.030 | 8,600 |
| BT 30 | 16 | 27 | 34 | 80 | 49 | 4977 16.014 | 0.8 | 4790 16.030 | 8,600 |
| BT 30 | 18 | 33 | 42 | 90 | 49 | 4977 16.014 | 0.9 | 4790 18.030 | 8,600 |
| BT 30 | 20 | 33 | 42 | 90 | 51 | 4977 20.114 | 0.9 | 4790 20.030 | 8,600 |

燒結式 延長刀桿

產品特性說明

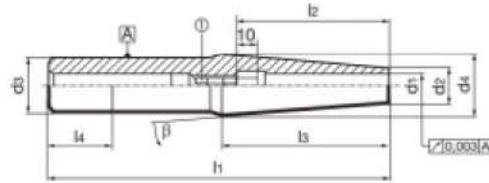
- for clamping in hydraulic chucks or shrink fit chucks
- for carbide tool shanks d1 h6 (from d1 14 mm HSS also possible)
- with adjusting screw 10 mm adjustment range
- suitable for internal cooling
- we recommend the use of special cooling adaptors art. no. 4419

•concentricity < 3 μm ; l1 from 115 mm = 5 μm ; l1 from 150 mm = 7 μm ; l1 from 200 mm = 9 μm

Scope of delivery:

- incl. adjusting screw ① art. no. 4977 or 4904

銼領編號 **4719**



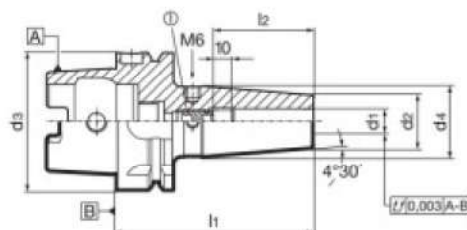
| 夾持柄徑 d1 mm h6 | d2 mm | d3 h6 mm | d4 mm | l1 mm | l2 mm | l3 mm | ① 調整螺絲 | β 角度 | Code. | 價格 |
|------------------|----------|-------------|----------|----------|----------|----------|-------------|------|--------|-------|
| 3 | 7 | 16 | 16 | 115 | 30 | 64.4 | 4904 5.016 | 4 | 3,016 | 6,000 |
| 4 | 7 | 16 | 16 | 115 | 35 | 64.4 | 4904 6.016 | 4 | 4,016 | 6,000 |
| 5 | 8 | 16 | 16 | 115 | 40 | 57 | 4904 8.016 | 4 | 5,016 | 6,000 |
| 6 | 10 | 16 | 16 | 115 | 36 | 43 | 4977 6.014 | 4 | 6,016 | 5,600 |
| 8 | 12 | 16 | 16 | 115 | 36 | 29 | 4977 8.014 | 4 | 8,016 | 5,600 |
| 10 | 14 | 16 | 16 | 115 | 41 | 14 | 4977 10.014 | 4 | 10,016 | 5,600 |
| 12 | 16 | 16 | 23 | 115 | 46 | 51.5 | 4977 12.014 | 4 | 12,016 | 5,600 |
| 3 | 7 | 20 | 16 | 115 | 30 | 65 | 4904 5.016 | 4 | 3,020 | 6,000 |
| 4 | 8 | 20 | 17 | 115 | 35 | 65 | 4904 6.016 | 4 | 4,020 | 6,000 |
| 5 | 9 | 20 | 18 | 115 | 40 | 65 | 4904 8.016 | 4 | 5,020 | 6,000 |
| 6 | 10 | 20 | 19 | 115 | 36 | 65 | 4977 6.014 | 4 | 6,020 | 5,600 |
| 8 | 12 | 20 | 20 | 115 | 36 | 57 | 4977 8.014 | 4 | 8,020 | 5,600 |
| 10 | 14 | 20 | 20 | 115 | 41 | 43 | 4977 10.014 | 4 | 10,020 | 5,600 |
| 12 | 16 | 20 | 20 | 115 | 46 | 29 | 4977 12.014 | 4 | 12,020 | 5,600 |
| 14 | 20 | 20 | 29 | 150 | 46 | 63 | 4977 12.014 | 4 | 14,020 | 5,600 |
| 3 | 10 | 20 | 20 | 160 | 30 | 71.5 | 4904 5.016 | 4 | 3,120 | 6,300 |
| 4 | 10 | 20 | 20 | 160 | 35 | 71.5 | 4904 6.016 | 4 | 4,120 | 6,300 |
| 5 | 10 | 20 | 20 | 160 | 40 | 71.5 | 4904 8.016 | 4 | 5,120 | 6,300 |
| 6 | 14 | 20 | 20 | 160 | 36 | 43 | 4977 6.014 | 4 | 6,120 | 6,000 |
| 8 | 14 | 20 | 20 | 160 | 36 | 43 | 4977 8.014 | 4 | 8,120 | 6,000 |
| 10 | 20 | 25 | 25 | 160 | 41 | 35.8 | 4977 10.014 | 4 | 10,125 | 6,300 |
| 12 | 20 | 25 | 25 | 160 | 46 | 35.8 | 4977 12.014 | 4 | 12,125 | 6,300 |
| 14 | 20 | 25 | 29 | 160 | 46 | 62.9 | 4977 16.014 | 4 | 14,125 | 6,300 |
| 16 | 22 | 25 | 33 | 160 | 49 | 78.7 | 4977 16.014 | 4 | 16,125 | 6,300 |
| 18 | 27 | 32 | 32 | 160 | 49 | 35.8 | 4977 16.014 | 4 | 18,132 | 6,800 |
| 20 | 27 | 32 | 32 | 160 | 51 | 35.8 | 4977 20.114 | 4 | 20,132 | 6,800 |
| 3 | 10 | 20 | 20 | 200 | 30 | 71.5 | 4904 5.016 | 4 | 3,220 | 7,100 |
| 4 | 10 | 20 | 20 | 200 | 35 | 71.5 | 4904 6.016 | 4 | 4,220 | 7,100 |
| 5 | 10 | 20 | 20 | 200 | 40 | 71.5 | 4904 8.016 | 4 | 5,220 | 7,100 |
| 6 | 14 | 20 | 20 | 200 | 36 | 42.9 | 4977 6.014 | 4 | 6,220 | 6,800 |
| 8 | 14 | 20 | 20 | 200 | 36 | 42.9 | 4977 8.014 | 4 | 8,220 | 6,800 |
| 10 | 20 | 25 | 25 | 200 | 41 | 35.8 | 4977 10.014 | 4 | 10,225 | 7,100 |
| 12 | 20 | 25 | 25 | 200 | 46 | 35.8 | 4977 12.014 | 4 | 12,225 | 7,100 |
| 14 | 20 | 32 | 32 | 200 | 46 | 85.8 | 4977 16.014 | 4 | 14,232 | 7,400 |
| 16 | 24 | 32 | 32 | 200 | 49 | 57.2 | 4977 16.014 | 4 | 16,232 | 7,400 |
| 18 | 27 | 32 | 32 | 200 | 49 | 35.8 | 4977 16.014 | 4 | 18,232 | 7,400 |
| 20 | 27 | 32 | 32 | 200 | 51 | 35.8 | 4977 20.114 | 4 | 20,232 | 7,400 |
| 6 | 10 | 12 | 12 | 125 | 38 | 19.1 | | 3 | 6,012 | 5,900 |
| 8 | 12 | 14 | 14 | 125 | 38 | 19.1 | | 3 | 8,014 | 5,900 |
| 10 | 14 | 16 | 16 | 160 | 42 | 19.1 | | 3 | 10,116 | 6,200 |
| 12 | 16 | 20 | 20 | 160 | 47 | 38.2 | | 3 | 12,120 | 6,200 |
| 16 | 22 | 25 | 25 | 160 | 50 | 28.6 | | 3 | 16,225 | 6,800 |
| 20 | 27 | 32 | 32 | 160 | 52 | 47.7 | | 3 | 20,332 | 7,400 |

HSK-A 燒結式夾頭

產品特性說明

- HSK-A according to ISO 12164-1 / DIN 69893-1
- dimensions according to DIN 69882-8
- 動平衡 G 2.5 / 25,000 rpm or rev. < 1 gmm
- 刀具夾持柄徑公差必須 h6
- axial length adjustment
- 包含動平衡調整螺紋 4xM6/6xM6

- 偏擺 3 μ m
- l₁ = 120 mm: 偏擺 4 μ m, l₁ = 160 mm: 偏擺 5 μ m,
- l₁ = 200 mm: 偏擺 7 μ m



| HSK-A d ₃ | 夾持柄徑 d ₁ mm h6 | d ₂ mm | d ₄ mm | l ₁ mm | l ₂ mm | ① 調整螺絲 | | 重量 Kg | Code. | 價格 |
|-------------------------|------------------------------|----------------------|----------------------|----------------------|----------------------|--------|--------|----------|---------|-------|
| 32 | 6 | 21 | 25.5 | 70 | 36 | 4977 | 6,014 | 0.3 | 6,032 | 7,600 |
| 32 | 8 | 21 | 25.5 | 70 | 36 | 4977 | 8,014 | 0.3 | 8,032 | 7,600 |
| 32 | 10 | 24 | 30.0 | 75 | 41 | 4977 | 10,014 | 0.3 | 10,032 | 7,600 |
| 32 | 12 | 24 | 30.0 | 80 | 46 | 4977 | 12,014 | 0.3 | 12,032 | 7,600 |
| 40 | 6 | 21 | 27.0 | 80 | 36 | 4977 | 6,014 | 0.4 | 6,040 | 7,600 |
| 40 | 8 | 21 | 27.0 | 80 | 36 | 4977 | 8,014 | 0.4 | 8,040 | 7,600 |
| 40 | 10 | 24 | 32.0 | 80 | 41 | 4977 | 10,014 | 0.5 | 10,040 | 7,600 |
| 40 | 12 | 24 | 32.0 | 90 | 46 | 4977 | 12,014 | 0.5 | 12,040 | 7,600 |
| 40 | 14 | 27 | 34.0 | 90 | 46 | 4977 | 12,014 | 0.6 | 14,040 | 7,600 |
| 40 | 16 | 27 | 34.0 | 90 | 49 | 4977 | 16,014 | 0.5 | 16,040 | 7,600 |
| 40 | 18 | 33 | 42.0 | 95 | 49 | 4977 | 16,014 | 0.9 | 18,040 | 7,600 |
| 40 | 20 | 33 | 42.0 | 100 | 51 | 4977 | 20,014 | 0.9 | 20,040 | 7,600 |
| 50 | 6 | 21 | 27.0 | 80 | 36 | 4977 | 6,014 | 0.57 | 6,050 | 7,100 |
| 50 | 8 | 21 | 27.0 | 80 | 36 | 4977 | 8,014 | 0.58 | 8,050 | 7,100 |
| 50 | 10 | 24 | 32.0 | 85 | 41 | 4977 | 10,014 | 0.65 | 10,050 | 7,100 |
| 50 | 12 | 24 | 32.0 | 90 | 46 | 4977 | 12,014 | 0.67 | 12,050 | 7,100 |
| 50 | 14 | 27 | 34.0 | 90 | 46 | 4977 | 12,014 | 0.72 | 14,050 | 7,100 |
| 50 | 16 | 27 | 34.0 | 95 | 49 | 4977 | 16,014 | 0.73 | 16,050 | 7,100 |
| 50 | 18 | 33 | 41.5 | 95 | 49 | 4977 | 16,014 | 0.90 | 18,050 | 7,100 |
| 50 | 20 | 33 | 41.5 | 100 | 51 | 4977 | 20,114 | 0.92 | 20,050 | 7,100 |
| 63 | 3 | 10 | 18.0 | 80 | 30 | 4904 | 5,016 | 0.70 | 3,063 | 8,700 |
| 63 | 4 | 10 | 18.0 | 80 | 35 | 4904 | 6,016 | 0.70 | 4,063 | 8,700 |
| 63 | 5 | 10 | 18.0 | 80 | 40 | 4904 | 8,018 | 0.70 | 5,063 | 8,700 |
| 63 | 6 | 21 | 27.0 | 80 | 36 | 4977 | 6,014 | 0.83 | 6,063 | 7,600 |
| 63 | 8 | 21 | 27.0 | 80 | 36 | 4977 | 8,014 | 0.82 | 8,063 | 7,600 |
| 63 | 10 | 24 | 32.0 | 85 | 41 | 4977 | 10,014 | 0.91 | 10,063 | 7,600 |
| 63 | 12 | 24 | 32.0 | 90 | 46 | 4977 | 12,014 | 0.92 | 12,063 | 7,600 |
| 63 | 14 | 27 | 34.0 | 90 | 46 | 4977 | 12,014 | 0.97 | 14,063 | 7,600 |
| 63 | 16 | 27 | 34.0 | 95 | 49 | 4977 | 16,014 | 0.98 | 16,063 | 7,600 |
| 63 | 18 | 33 | 42.0 | 95 | 49 | 4977 | 16,014 | 1.16 | 18,063 | 7,600 |
| 63 | 20 | 33 | 42.0 | 100 | 51 | 4977 | 20,114 | 1.18 | 20,063 | 7,600 |
| 63 | 25 | 44 | 52.5 | 115 | 57 | 4977 | 20,114 | 1.77 | 25,063 | 7,600 |
| 63 | 32 | 44 | 52.5 | 120 | 61 | 4977 | 20,114 | 1.69 | 32,063 | 7,600 |
| 63 | 3 | 10 | 25.0 | 120 | 30 | 4904 | 5,016 | 0.80 | 203,063 | 8,900 |
| 63 | 4 | 10 | 25.0 | 120 | 35 | 4904 | 6,016 | 0.80 | 204,063 | 8,900 |
| 63 | 5 | 10 | 25.0 | 120 | 40 | 4904 | 8,018 | 0.80 | 205,063 | 8,900 |
| 63 | 6 | 21 | 27.0 | 120 | 36 | 4977 | 6,014 | 0.90 | 206,063 | 8,900 |
| 63 | 8 | 21 | 27.0 | 120 | 36 | 4977 | 8,014 | 1.00 | 208,063 | 8,900 |
| 63 | 10 | 24 | 32.0 | 120 | 41 | 4977 | 10,014 | 1.10 | 210,063 | 8,900 |
| 63 | 12 | 24 | 32.0 | 120 | 46 | 4977 | 12,014 | 1.20 | 212,063 | 8,900 |
| 63 | 14 | 27 | 34.0 | 120 | 46 | 4977 | 12,014 | 1.20 | 214,063 | 8,900 |
| 63 | 16 | 27 | 34.0 | 120 | 49 | 4977 | 16,014 | 1.20 | 216,063 | 8,900 |
| 63 | 18 | 33 | 42.0 | 120 | 49 | 4977 | 16,014 | 1.40 | 218,063 | 8,900 |
| 63 | 20 | 33 | 42.0 | 120 | 51 | 4977 | 20,014 | 1.40 | 220,063 | 8,900 |

HSK-A 燒結式夾頭

| | | | | | | | | 鉗領編號 | 4736 | |
|-------------|------------------|----------|----------|----------|----------|--------|--------|----------|---------|--------|
| HSK-A d3 | 夾持柄徑 d1 mm h6 | d2 mm | d4 mm | l1 mm | l2 mm | ① 調整螺絲 | | 重量 Kg | Code. | 價格 |
| 63 | 3 | 10 | 31.0 | 160 | 30 | 4904 | 5,016 | 0.90 | 103,063 | 11,200 |
| 63 | 4 | 10 | 31.0 | 160 | 35 | 4904 | 6,016 | 0.90 | 104,063 | 11,200 |
| 63 | 5 | 10 | 31.0 | 160 | 40 | 4904 | 8,018 | 0.90 | 105,063 | 11,200 |
| 63 | 6 | 21 | 27.0 | 160 | 36 | 4977 | 6,014 | 1.10 | 106,063 | 11,200 |
| 63 | 8 | 21 | 27.0 | 160 | 36 | 4977 | 8,014 | 1.10 | 108,063 | 11,200 |
| 63 | 10 | 24 | 32.0 | 160 | 41 | 4977 | 10,014 | 1.30 | 110,063 | 11,200 |
| 63 | 12 | 24 | 32.0 | 160 | 46 | 4977 | 12,014 | 1.30 | 112,063 | 11,200 |
| 63 | 14 | 27 | 34.0 | 160 | 46 | 4977 | 12,014 | 1.40 | 114,063 | 11,200 |
| 63 | 16 | 27 | 34.0 | 160 | 49 | 4977 | 16,014 | 1.40 | 116,063 | 11,200 |
| 63 | 18 | 33 | 42.0 | 160 | 49 | 4977 | 16,014 | 1.60 | 118,063 | 11,200 |
| 63 | 20 | 33 | 42.0 | 160 | 51 | 4977 | 20,114 | 1.60 | 120,063 | 11,200 |
| 63 | 25 | 44 | 52.5 | 160 | 57 | 4977 | 20,114 | 1.80 | 125,063 | 11,200 |
| 63 | 32 | 44 | 52.5 | 160 | 61 | 4977 | 20,114 | 1.70 | 132,063 | 11,200 |
| 63 | 6 | 21 | 27.0 | 200 | 36 | 4977 | 6,014 | 1.30 | 306,063 | 12,000 |
| 63 | 8 | 21 | 27.0 | 200 | 36 | 4977 | 8,014 | 1.30 | 308,063 | 12,000 |
| 63 | 10 | 24 | 32.0 | 200 | 41 | 4977 | 10,014 | 1.50 | 310,063 | 12,000 |
| 63 | 12 | 24 | 32.0 | 200 | 46 | 4977 | 12,014 | 1.50 | 312,063 | 12,000 |
| 63 | 14 | 27 | 34.0 | 200 | 46 | 4977 | 12,014 | 1.70 | 314,063 | 12,000 |
| 63 | 16 | 27 | 34.0 | 200 | 49 | 4977 | 16,014 | 1.70 | 316,063 | 12,000 |
| 63 | 18 | 33 | 42.0 | 200 | 49 | 4977 | 16,014 | 1.80 | 318,063 | 12,000 |
| 63 | 20 | 33 | 42.0 | 200 | 51 | 4977 | 20,114 | 1.80 | 320,063 | 12,000 |
| 63 | 25 | 44 | 53.0 | 200 | 57 | 4977 | 20,114 | 2.00 | 325,063 | 12,000 |
| 63 | 32 | 44 | 53.0 | 200 | 61 | 4977 | 20,114 | 1.90 | 332,063 | 12,000 |
| 80 | 6 | 21 | 27.0 | 85 | 36 | 4977 | 6,014 | 1.30 | 6,080 | 9,300 |
| 80 | 8 | 21 | 27.0 | 85 | 36 | 4977 | 8,014 | 1.30 | 8,080 | 9,300 |
| 80 | 10 | 24 | 32.0 | 90 | 41 | 4977 | 10,014 | 1.40 | 10,080 | 9,300 |
| 80 | 12 | 24 | 32.0 | 95 | 46 | 4977 | 12,014 | 1.40 | 12,080 | 9,300 |
| 80 | 14 | 27 | 34.0 | 95 | 46 | 4977 | 12,014 | 1.50 | 14,080 | 9,300 |
| 80 | 16 | 27 | 34.0 | 100 | 49 | 4977 | 16,014 | 1.50 | 16,080 | 9,300 |
| 80 | 18 | 33 | 42.0 | 100 | 49 | 4977 | 16,014 | 1.70 | 18,080 | 9,300 |
| 80 | 20 | 33 | 42.0 | 105 | 51 | 4977 | 20,114 | 1.70 | 20,080 | 9,300 |
| 80 | 25 | 44 | 53.0 | 115 | 57 | 4977 | 20,114 | 2.20 | 25,080 | 9,300 |
| 80 | 32 | 44 | 53.0 | 120 | 61 | 4977 | 20,114 | 2.10 | 32,080 | 9,300 |
| 80 | 6 | 21 | 27.0 | 160 | 36 | 4977 | 6,014 | 1.60 | 106,080 | 12,100 |
| 80 | 8 | 21 | 27.0 | 160 | 36 | 4977 | 8,014 | 1.60 | 108,080 | 12,100 |
| 80 | 10 | 24 | 32.0 | 160 | 41 | 4977 | 10,014 | 1.80 | 110,080 | 12,100 |
| 80 | 12 | 24 | 32.0 | 160 | 46 | 4977 | 12,014 | 1.80 | 112,080 | 12,100 |
| 80 | 14 | 27 | 34.0 | 160 | 46 | 4977 | 12,014 | 1.90 | 114,080 | 12,100 |
| 80 | 16 | 27 | 34.0 | 160 | 49 | 4977 | 16,014 | 1.90 | 116,080 | 12,100 |
| 80 | 18 | 33 | 42.0 | 160 | 49 | 4977 | 16,014 | 2.30 | 118,080 | 12,100 |
| 80 | 20 | 33 | 42.0 | 160 | 51 | 4977 | 20,114 | 2.30 | 120,080 | 12,100 |
| 80 | 25 | 44 | 53.0 | 160 | 57 | 4977 | 20,114 | 3.00 | 125,080 | 12,100 |
| 80 | 32 | 44 | 53.0 | 160 | 61 | 4977 | 20,114 | 2.80 | 132,080 | 12,100 |
| 100 | 6 | 21 | 27.0 | 85 | 36 | 4977 | 6,014 | 2.20 | 6,100 | 11,000 |
| 100 | 8 | 21 | 27.0 | 85 | 36 | 4977 | 8,014 | 2.20 | 8,100 | 11,000 |
| 100 | 10 | 24 | 32.0 | 90 | 41 | 4977 | 10,014 | 2.30 | 10,100 | 11,000 |
| 100 | 12 | 24 | 32.0 | 95 | 46 | 4977 | 12,014 | 2.30 | 12,100 | 11,000 |
| 100 | 14 | 27 | 34.0 | 95 | 46 | 4977 | 12,014 | 2.30 | 14,100 | 11,000 |
| 100 | 16 | 27 | 34.0 | 100 | 49 | 4977 | 16,014 | 2.30 | 16,100 | 11,000 |
| 100 | 18 | 33 | 42.0 | 100 | 49 | 4977 | 16,014 | 2.50 | 18,100 | 11,000 |
| 100 | 20 | 33 | 42.0 | 105 | 51 | 4977 | 20,114 | 2.50 | 20,100 | 11,000 |
| 100 | 25 | 44 | 53.0 | 115 | 57 | 4977 | 20,114 | 3.00 | 25,100 | 11,000 |
| 100 | 32 | 44 | 53.0 | 120 | 61 | 4977 | 20,114 | 3.00 | 32,100 | 11,000 |
| 100 | 6 | 21 | 27.0 | 160 | 36 | 4977 | 6,014 | 2.60 | 106,100 | 15,000 |
| 100 | 8 | 21 | 27.0 | 160 | 36 | 4977 | 8,014 | 2.50 | 108,100 | 15,000 |
| 100 | 10 | 24 | 32.0 | 160 | 41 | 4977 | 10,014 | 2.70 | 110,100 | 15,000 |
| 100 | 12 | 24 | 32.0 | 160 | 46 | 4977 | 12,014 | 2.70 | 112,100 | 15,000 |
| 100 | 14 | 27 | 34.0 | 160 | 46 | 4977 | 12,014 | 2.80 | 114,100 | 15,000 |
| 100 | 16 | 27 | 34.0 | 160 | 49 | 4977 | 16,014 | 2.80 | 116,100 | 15,000 |
| 100 | 18 | 33 | 42.0 | 160 | 49 | 4977 | 16,014 | 3.20 | 118,100 | 15,000 |
| 100 | 20 | 33 | 42.0 | 160 | 51 | 4977 | 20,114 | 3.10 | 120,100 | 15,000 |
| 100 | 25 | 44 | 53.0 | 160 | 57 | 4977 | 20,114 | 3.90 | 125,100 | 15,000 |
| 100 | 32 | 44 | 53.0 | 160 | 61 | 4977 | 20,114 | 3.70 | 132,100 | 15,000 |

HSK-A 燒結式夾頭

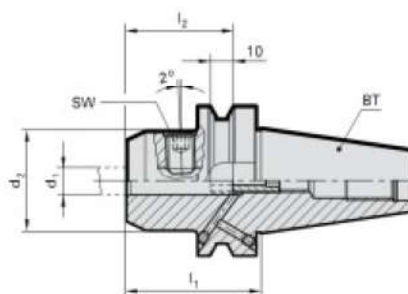
| | | | | | | | | | 鈔領編號 | 4736 | |
|-------------|------------------|----------|----------|----------|----------|--------|--------|----------|---------|--------|--|
| HSK-A d3 | 夾持柄徑 d1 mm h6 | d2 mm | d4 mm | l1 mm | l2 mm | ① 調整螺絲 | | 重量 Kg | Code. | 價格 | |
| 100 | 6 | 21 | 27.0 | 200 | 36 | 4977 | 6,014 | 2.80 | 306,100 | 17,000 | |
| 100 | 8 | 21 | 27.0 | 200 | 36 | 4977 | 8,014 | 2.80 | 308,100 | 17,000 | |
| 100 | 10 | 24 | 32.0 | 200 | 41 | 4977 | 10,014 | 2.90 | 310,100 | 17,000 | |
| 100 | 12 | 24 | 32.0 | 200 | 46 | 4977 | 12,014 | 2.90 | 312,100 | 17,000 | |
| 100 | 14 | 27 | 34.0 | 200 | 46 | 4977 | 12,014 | 3.00 | 314,100 | 17,000 | |
| 100 | 16 | 27 | 34.0 | 200 | 49 | 4977 | 16,014 | 3.00 | 316,100 | 17,000 | |
| 100 | 18 | 33 | 42.0 | 200 | 49 | 4977 | 16,014 | 3.40 | 318,100 | 17,000 | |
| 100 | 20 | 33 | 42.0 | 200 | 51 | 4977 | 20,114 | 3.30 | 320,100 | 17,000 | |
| 100 | 25 | 44 | 53.0 | 200 | 57 | 4977 | 20,114 | 4.00 | 325,100 | 17,000 | |
| 100 | 32 | 44 | 53.0 | 200 | 61 | 4977 | 20,114 | 3.90 | 332,100 | 17,000 | |

BT40 / 50 側固式刀桿

產品特性說明

- MAS/BT to DIN ISO 7388-2 Form JD/JF
- with mounting hole DIN 1835-2, Form E „Whistle Notch“
- balancing quality: G 6.3 / 15,000 rpm
- missing dimensions according to DIN 69895
- from holder d1 = 25 mm with 2 clamping screws, Guhring no. 4903

- incl. clamping screw Guhring no. 4903 and adjustment screw
- order pull studs, Guhring no. 4927 or 4928 separately



鈔領編號 4233



| BT | 夾持柄徑 d1 mm h6 | d2 mm | l1 mm | l2 mm | SW | Code no. | 價格 |
|------|------------------|----------|----------|----------|----|----------|-------|
| 40 | 6 | 25 | 50 | 36 | 3 | 6,040 | 5,800 |
| 40 | 8 | 28 | 50 | 36 | 4 | 8,040 | 5,800 |
| 40 | 10 | 35 | 63 | 40 | 5 | 10,040 | 5,800 |
| 40 | 12 | 42 | 63 | 45 | 6 | 12,040 | 5,800 |
| 40 | 14 | 44 | 63 | 45 | 6 | 14,040 | 5,800 |
| 40 | 16 | 48 | 63 | 48 | 6 | 16,040 | 5,800 |
| 40 | 18 | 50 | 63 | 48 | 6 | 18,040 | 5,800 |
| 40 | 20 | 52 | 63 | 50 | 8 | 20,040 | 5,800 |
| 40 | 25 | 63 | 90 | 56 | 10 | 25,040 | 5,800 |
| 40 | 32 | 72 | 100 | 60 | 10 | 32,040 | 5,800 |
| 50 * | 6 | 25 | 63 | 36 | 3 | 6,050 | 8,500 |
| 50 * | 8 | 28 | 63 | 36 | 4 | 8,050 | 8,500 |
| 50 * | 10 | 35 | 63 | 40 | 5 | 10,050 | 8,500 |
| 50 * | 12 | 42 | 80 | 45 | 6 | 12,050 | 8,500 |
| 50 * | 14 | 44 | 80 | 45 | 6 | 14,050 | 8,500 |
| 50 * | 16 | 48 | 80 | 48 | 6 | 16,050 | 8,500 |
| 50 * | 18 | 50 | 80 | 48 | 6 | 18,050 | 8,500 |
| 50 * | 20 | 52 | 80 | 50 | 8 | 20,050 | 8,500 |
| 50 * | 25 | 65 | 100 | 56 | 10 | 25,050 | 8,500 |
| 50 * | 32 | 72 | 105 | 60 | 10 | 32,050 | 8,500 |