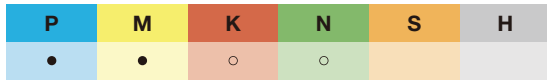




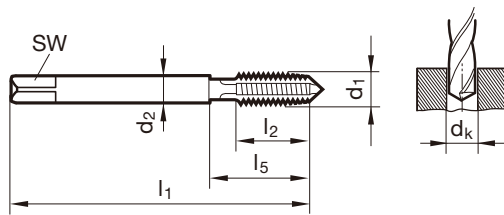
Taps for ISO metric fine threads

公制細牙 通孔用



Tool material	HSS-E	
Surface	○	Ⓢ
Type	N	N
Form	B	B
Cutting direction	right-hand	right-hand

M12(含)以上為 4刃、以下尺寸皆為 3刃



JIS B 4430 編號 4434 4435

d1	d2	SW	dk	l1	l2	l5	Code	Tolerance	價格	
	mm	mm	mm	mm	mm	mm	尾碼	公差		
M6 x 0.75	6.000	4.50	5.20	62.00	13.00	30.00	6,024	OH2	880	1,190
M8 x 1	6.200	5.00	7.00	70.00	17.00	35.00	8,025	OH2	950	1,250
M10 x 1	7.000	5.50	9.00	70.00	16.00	35.00	10,025	OH2	950	1,360
M10 x 1.25	7.000	5.50	8.80	75.00	20.00	39.00	10,026	OH2	1,170	1,360
M12 x 1	8.500	6.50	11.00	70.00	20.00	40.00	12,025	OH2	1,110	1,520
M12 x 1.25	8.500	6.50	10.80	80.00	20.00	40.00	12,026	OH2	1,030	1,480
M12 x 1.5	8.500	6.50	10.50	82.00	20.00	40.00	12,027	OH2	1,030	1,480
M14 x 1.5	10.500	8.00	12.50	88.00	20.00	40.00	14,027	OH2	1,360	1,850
M16 x 1.5	12.500	10.00	14.50	95.00	22.00	44.00	16,027	OH2	1,520	2,300
M18 x 1.5	14.000	11.00	16.50	95.00	25.00	44.00	18,027	OH2	1,850	2,960
M20 x 1.5	15.000	12.00	18.50	95.00	25.00	44.00	20,027	OH2	2,220	3,740

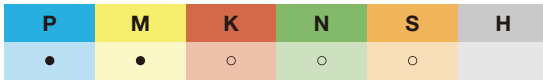


Taps for ISO metric fine threads

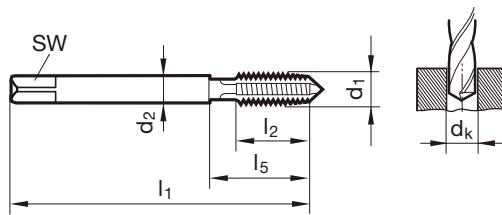
公制細牙 通孔用



Tool material **HSS-E**  
 Surface **A**  
 Type VA  
 Form B  
 Cutting direction right-hand



M12(含)以上為4刀、以下尺寸皆為3刀



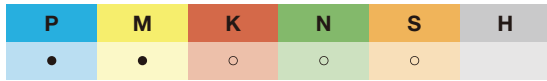
~JIS B 4430 編號 4552

d1	d2	SW	dk	l1	l2	l5	Code	Tolerance	價格
	mm	mm	mm	mm	mm	mm	尾碼	公差	
M6 x 0.75	6.000	4.50	5.20	62.00	13.00	30.00	6,024	OH2	1,040
M6 x 0.75	6.000	4.50	5.20	62.00	13.00	30.00	6,034	OH3	1,040
M8 x 1	6.200	5.00	7.00	70.00	17.00	35.00	8,035	OH3	1,210
M8 x 1	6.200	5.00	7.00	70.00	17.00	35.00	8,045	OH4	1,210
M10 x 1	7.000	5.50	9.00	75.00	20.00	35.00	10,035	OH3	1,450
M10 x 1.25	7.000	5.50	8.80	75.00	20.00	39.00	10,036	OH3	1,450
M10 x 1	7.000	5.50	9.00	75.00	20.00	35.00	10,045	OH4	1,450
M10 x 1.25	7.000	5.50	8.80	75.00	20.00	39.00	10,046	OH4	1,450
M12 x 1	8.500	6.50	11.00	82.00	20.00	40.00	12,035	OH3	1,840
M12 x 1.25	8.500	6.50	10.80	82.00	20.00	40.00	12,036	OH3	1,840
M12 x 1.5	8.500	6.50	10.50	82.00	20.00	40.00	12,037	OH3	1,840
M12 x 1	8.500	6.50	11.00	82.00	20.00	40.00	12,045	OH4	1,840
M12 x 1.25	8.500	6.50	10.80	82.00	20.00	40.00	12,046	OH4	1,840
M12 x 1.5	8.500	6.50	10.50	82.00	20.00	40.00	12,047	OH4	1,840
M12 x 1	8.500	6.50	11.00	82.00	20.00	40.00	12,055	OH5	1,840
M12 x 1.25	8.500	6.50	10.80	82.00	20.00	40.00	12,056	OH5	1,840
M12 x 1.5	8.500	6.50	10.50	82.00	20.00	40.00	12,057	OH5	1,840
M14 x 1.5	10.500	8.00	12.50	88.00	20.00	40.00	14,037	OH3	2,790
M14 x 1.5	10.500	8.00	12.50	88.00	20.00	40.00	14,047	OH4	2,790
M14 x 1.5	10.500	8.00	12.50	88.00	20.00	40.00	14,057	OH5	2,790
M16 x 1.5	12.500	10.00	14.50	95.00	22.00	44.00	16,037	OH3	3,190
M16 x 1.5	12.500	10.00	14.50	95.00	22.00	44.00	16,047	OH4	3,190
M16 x 1.5	12.500	10.00	14.50	95.00	22.00	44.00	16,057	OH5	3,190
M18 x 1.5	14.000	11.00	16.50	100.00	25.00	44.00	18,047	OH4	4,640
M18 x 1.5	14.000	11.00	16.50	100.00	25.00	44.00	18,057	OH5	4,640
M20 x 1.5	15.000	12.00	18.50	105.00	25.00	44.00	20,047	OH4	5,010
M20 x 1.5	15.000	12.00	18.50	105.00	25.00	44.00	20,057	OH5	5,010



Taps for ISO metric fine threads

公制細牙 通孔用

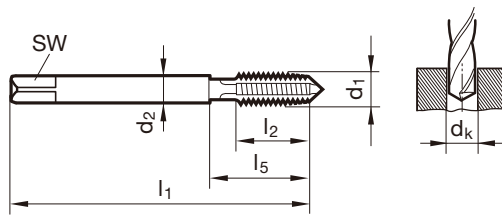


Tool material **HSS-E-PM**  
 Surface **A**  
 Type **VA**  
 Form **B**  
 Cutting direction **right-hand**

M12(含)以上為4刃、以下尺寸皆為3刃

**Pionex**

HSS-E PM粉末材質



JIS B 4430

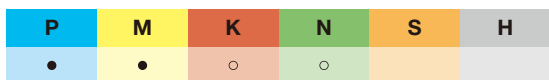
編號

4471

d1	d2	SW	dk	l1	l2	l5	Code	Tolerance	價格
	mm	mm	mm	mm	mm	mm	尾碼	公差	
M6 x 0.75	6.000	4.50	5.20	62.00	13.00	30.00	6,024	OH2	760
M8 x 1	6.200	5.00	7.00	70.00	17.00	35.00	8,035	OH3	990
M10 x 1	7.000	5.50	9.00	70.00	16.00	35.00	10,035	OH3	1,110
M10 x 1.25	7.000	5.50	8.80	75.00	20.00	39.00	10,036	OH3	1,190
M12 x 1	8.500	6.50	11.00	70.00	20.00	40.00	12,035	OH3	2,140
M12 x 1.25	8.500	6.50	10.80	80.00	20.00	40.00	12,036	OH3	2,220
M12 x 1.5	8.500	6.50	10.50	82.00	20.00	40.00	12,037	OH3	2,300
M14 x 1.5	10.500	8.00	12.50	88.00	20.00	40.00	14,037	OH3	2,840
M16 x 1.5	12.500	10.00	14.50	95.00	22.00	44.00	16,037	OH3	3,330
M20 x 1.5	15.000	12.00	18.50	95.00	25.00	44.00	20,047	OH4	4,730

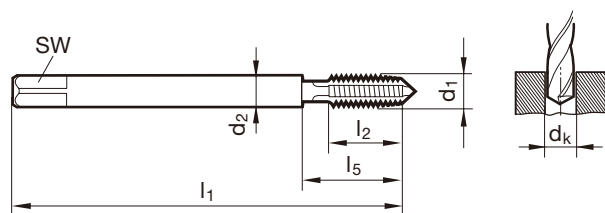


**Taps for ISO metric fine threads** 公制細牙 加長柄 通孔用



Tool material	<b>HSS-E</b>
Surface	○
Type	N
Form	B
Cutting direction	right-hand

M12(含)以上為4刃、以下尺寸皆為3刃



**Company std.** 編號 **4461**

d1	d2	SW	dk	l1	l2	l5	Code	Tolerance	價格
	mm	mm	mm	mm	mm	mm	尾碼	公差	
M6 x 0.75	6.000	4.50	5.20	150.00	13.00	30.00	6,024	OH2	2,550
M8 x 1	6.200	5.00	7.00	150.00	17.00	35.00	8,025	OH2	2,630
M10 x 1	7.000	5.50	9.00	150.00	16.00	35.00	10,025	OH2	2,920
M10 x 1.25	7.000	5.50	8.80	150.00	20.00	39.00	10,026	OH2	2,840
M12 x 1	8.500	6.50	11.00	150.00	20.00	40.00	12,025	OH2	3,080
M12 x 1.25	8.500	6.50	10.80	150.00	20.00	40.00	12,026	OH2	3,120
M12 x 1.5	8.500	6.50	10.50	150.00	20.00	40.00	12,027	OH2	3,040
M14 x 1.5	10.500	8.00	12.50	150.00	20.00	40.00	14,027	OH2	3,370
M16 x 1.5	12.500	10.00	14.50	150.00	22.00	44.00	16,027	OH2	3,540
M20 x 1.5	15.000	12.00	18.50	200.00	25.00	44.00	20,027	OH2	4,980



Taps for ISO metric fine threads

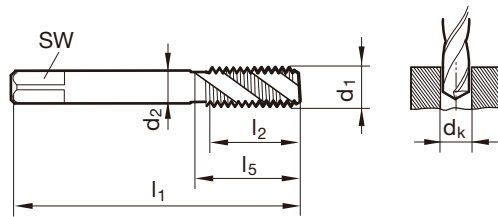
公制細牙 盲孔用



<b>P</b>	<b>M</b>	<b>K</b>	<b>N</b>	<b>S</b>	<b>H</b>
●	○	○	○		

Tool material	<b>HSS-E</b>	
Surface	○	Ⓢ
Type	N R40	N R40
Form	C	C
Cutting direction	right-hand	right-hand

M16(含)以上為4刀、以下尺寸皆為3刀



JIS B 4430 編號 4438 4439

d1	d2	SW	dk	l1	l2	l5	Code	Tolerance	價格	
	mm	mm	mm	mm	mm	mm	尾碼	公差		
M4 x 0.5	5.000	4.00	3.50	52.00	5.00	21.00	4,023	OH2	1,080	
M5 x 0.5	5.500	4.50	4.50	52.00	5.00	25.00	5,023	OH2	1,060	
M6 x 0.5	6.000	4.50	5.50	52.00	5.00	30.00	6,023	OH2	1,000	
M6 x 0.75	6.000	4.50	5.20	62.00	8.00	30.00	6,024	OH2	920	1,150
M8 x 0.75	6.200	5.00	7.20	62.00	8.00	30.00	8,024	OH2	920	
M8 x 1	6.200	5.00	7.00	70.00	11.00	35.00	8,025	OH2	820	1,030
M10 x 1	7.000	5.50	9.00	70.00	11.00	35.00	10,025	OH2	840	1,150
M10 x 1.25	7.000	5.50	8.80	75.00	14.00	39.00	10,026	OH2	1,010	1,250
M12 x 1	8.500	6.50	11.00	70.00	11.00	40.00	12,025	OH2	1,090	1,400
M12 x 1.25	8.500	6.50	10.80	80.00	15.00	40.00	12,026	OH2	1,360	1,680
M12 x 1.5	8.500	6.50	10.50	82.00	15.00	40.00	12,027	OH2	1,010	1,250
M14 x 1.5	10.500	8.00	12.50	88.00	15.00	40.00	14,027	OH2	1,250	1,810
M16 x 1.5	12.500	10.00	14.50	95.00	15.00	44.00	16,027	OH2	1,440	2,350
M18 x 1.5	14.000	11.00	16.50	95.00	16.00	44.00	18,027	OH2	2,810	2,510
M20 x 1.5	15.000	12.00	18.50	95.00	16.00	44.00	20,027	OH2	2,300	3,820
M22 x 1.5	17.000	13.00	20.50	95.00	16.00	44.00	22,027	OH2	3,230	

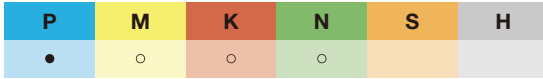


Taps for ISO metric fine threads

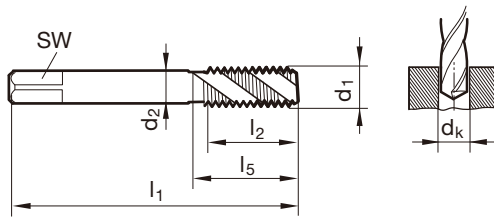
公制細牙 盲孔用



Tool material **HSS-E**  
 Surface ○  
 Type N R40  
 Form E  
 Cutting direction right-hand



M16(含)以上為4刃、以下尺寸皆為3刃



JIS B 4430

編號

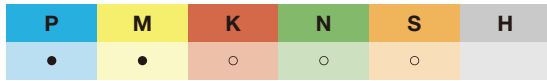
4580

d1	d2	SW	dk	l1	l2	l5	Code	Tolerance	價格
	mm	mm	mm	mm	mm	mm	尾碼	公差	
M6 x 0.75	6.000	4.50	5.20	62.00	8.00	30.00	6,024	OH2	630
M6 x 0.75	6.000	4.50	5.20	62.00	8.00	30.00	6,034	OH3	630
M8 x 1	6.200	5.00	7.00	70.00	11.00	35.00	8,035	OH3	720
M8 x 1	6.200	5.00	7.00	70.00	11.00	35.00	8,045	OH4	720
M10 x 1	7.000	5.50	9.00	70.00	11.00	35.00	10,035	OH3	1,040
M10 x 1.25	7.000	5.50	8.80	75.00	14.00	39.00	10,036	OH3	1,040
M10 x 1	7.000	5.50	9.00	70.00	11.00	35.00	10,045	OH4	1,040
M10 x 1.25	7.000	5.50	8.80	75.00	14.00	39.00	10,046	OH4	1,040
M12 x 1	8.500	6.50	11.00	70.00	11.00	40.00	12,035	OH3	1,110
M12 x 1.25	8.500	6.50	10.80	80.00	15.00	40.00	12,036	OH3	1,110
M12 x 1.5	8.500	6.50	10.50	82.00	15.00	40.00	12,037	OH3	1,110
M12 x 1	8.500	6.50	11.00	70.00	11.00	40.00	12,045	OH4	1,110
M12 x 1.25	8.500	6.50	10.80	80.00	15.00	40.00	12,046	OH4	1,110
M12 x 1.5	8.500	6.50	10.50	82.00	15.00	40.00	12,047	OH4	1,110
M14 x 1.5	10.500	8.00	12.50	88.00	15.00	40.00	14,037	OH3	1,690
M16 x 1.5	12.500	10.00	14.50	95.00	15.00	44.00	16,037	OH3	1,840
M18 x 1.5	14.000	11.00	16.50	95.00	16.00	44.00	18,037	OH3	2,600
M20 x 1.5	15.000	12.00	18.50	95.00	16.00	44.00	20,037	OH3	3,340



Taps for ISO metric fine threads

公制細牙 盲孔用



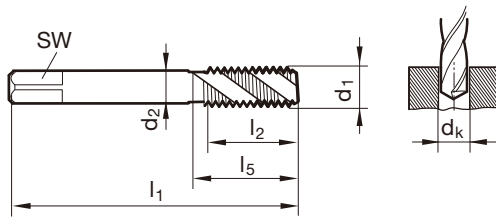
Tool material	HSS-E		
Surface	○	● S	● A
Type	VA R45	VA R45	VA R45
Form	C	C	C
Cutting direction	right-hand	right-hand	right-hand



Pionex



M16(含)以上為4刃、以下尺寸皆為3刃



~JIS B 4430 編號 4592 4591 4590

d1	d2	SW	dk	l1	l2	l5	Code	Tolerance	價格		
	mm	mm	mm	mm	mm	mm	尾碼	公差			
M6 x 0.75	6.000	4.50	5.20	62.00	8.00	30.00	6,024	OH2	630	970	630
M6 x 0.75	6.000	4.50	5.20	62.00	8.00	30.00	6,034	OH3	630	970	630
M8 x 1	6.200	5.00	7.00	70.00	11.00	35.00	8,035	OH3	760	1,130	760
M8 x 1	6.200	5.00	7.00	70.00	11.00	35.00	8,045	OH4	760	1,130	760
M10 x 1	7.000	5.50	9.00	75.00	11.00	35.00	10,035	OH3	890	1,360	890
M10 x 1.25	7.000	5.50	8.80	75.00	14.00	39.00	10,036	OH3	890	1,360	890
M10 x 1	7.000	5.50	9.00	75.00	11.00	35.00	10,045	OH4	890	1,360	890
M10 x 1.25	7.000	5.50	8.80	75.00	14.00	39.00	10,046	OH4	890	1,360	890
M12 x 1	8.500	6.50	11.00	82.00	11.00	40.00	12,035	OH3	1,020	1,560	1,020
M12 x 1.25	8.500	6.50	10.80	82.00	15.00	40.00	12,036	OH3	1,020	1,560	1,020
M12 x 1.5	8.500	6.50	10.50	82.00	15.00	40.00	12,037	OH3	1,020	1,560	1,020
M12 x 1	8.500	6.50	11.00	82.00	11.00	40.00	12,045	OH4	1,020	1,560	1,020
M12 x 1.25	8.500	6.50	10.80	82.00	15.00	40.00	12,046	OH4	1,020	1,560	1,020
M12 x 1.5	8.500	6.50	10.50	82.00	15.00	40.00	12,047	OH4	1,020	1,560	1,020
M12 x 1	8.500	6.50	11.00	82.00	11.00	40.00	12,055	OH5	1,020	1,560	1,020
M12 x 1.25	8.500	6.50	10.80	82.00	15.00	40.00	12,056	OH5	1,020	1,560	1,020
M12 x 1.5	8.500	6.50	10.50	82.00	15.00	40.00	12,057	OH5	1,020	1,560	1,020
M14 x 1.5	10.500	8.00	12.50	88.00	15.00	40.00	14,037	OH3	1,690	2,620	1,690
M14 x 1.5	10.500	8.00	12.50	88.00	15.00	40.00	14,047	OH4	1,690	2,620	1,690
M14 x 1.5	10.500	8.00	12.50	88.00	15.00	40.00	14,057	OH5	1,690	2,620	1,690
M16 x 1.5	12.500	10.00	14.50	95.00	15.00	44.00	16,037	OH3	1,930	2,920	1,930
M16 x 1.5	12.500	10.00	14.50	95.00	15.00	44.00	16,047	OH4	1,930	2,920	1,930
M16 x 1.5	12.500	10.00	14.50	95.00	15.00	44.00	16,057	OH5	1,930	2,920	1,930
M18 x 1.5	14.000	11.00	16.50	100.00	16.00	44.00	18,047	OH4	2,670	4,120	2,670
M18 x 1.5	14.000	11.00	16.50	100.00	16.00	44.00	18,057	OH5	2,670	4,120	2,670
M20 x 1.5	15.000	12.00	18.50	105.00	16.00	44.00	20,047	OH4	3,360	5,200	3,360
M20 x 1.5	15.000	12.00	18.50	105.00	16.00	44.00	22,057	OH5	3,360	5,200	3,360

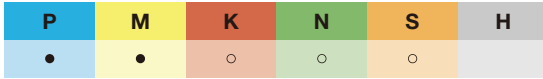


Taps for ISO metric fine threads

公制細牙 盲孔用



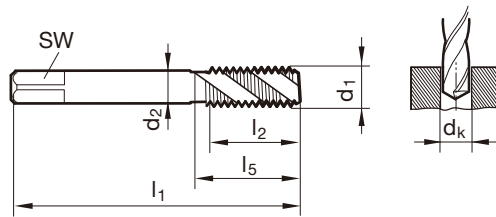
Tool material **HSS-E-PM**  
 Surface **A**  
 Type VA R45  
 Form C  
 Cutting direction right-hand



M16(含)以上為4刀、以下尺寸皆為3刀

**Pionex**

HSS-E PM粉末材質



JIS B 4430 編號 4450

d1	d2	SW	dk	l1	l2	l5	Code	Tolerance	價格
	mm	mm	mm	mm	mm	mm	尾碼	公差	
M6 x 0.75	6.000	4.50	5.20	62.00	8.00	30.00	6,024	OH2	760
M8 x 1	6.200	5.00	7.00	70.00	11.00	35.00	8,035	OH3	990
M10 x 1	7.000	5.50	9.00	70.00	11.00	35.00	10,035	OH3	1,110
M10 x 1.25	7.000	5.50	8.80	75.00	14.00	39.00	10,036	OH3	1,190
M12 x 1	8.500	6.50	11.00	70.00	11.00	40.00	12,035	OH3	2,140
M12 x 1.25	8.500	6.50	10.80	80.00	15.00	40.00	12,036	OH3	2,220
M12 x 1.5	8.500	6.50	10.50	82.00	15.00	40.00	12,037	OH3	2,300
M14 x 1.5	10.500	8.00	12.50	88.00	15.00	40.00	14,037	OH3	2,840
M16 x 1.5	12.500	10.00	14.50	95.00	15.00	44.00	16,037	OH3	3,330
M20 x 1.5	15.000	12.00	18.50	95.00	16.00	44.00	20,047	OH4	4,730



Taps for ISO metric fine threads

公制細牙 加長柄 盲孔用

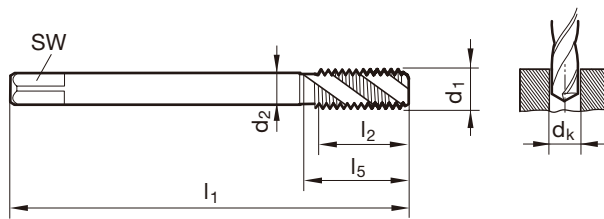


Tool material	HSS-E
Surface	○
Type	N R40
Form	C
Cutting direction	right-hand

P	M	K	N	S	H
●	○	○	○		

Cutting data page 69

M16(含)以上為4刃、以下尺寸皆為3刃



Company std.

編號

4463

d1	d2	SW	dk	l1	l2	l5	Code	Tolerance	價格
	mm	mm	mm	mm	mm	mm	尾碼	公差	
M6 x 0.75	6.000	4.50	5.20	150.00	8.00	30.00	6,024	OH2	2,550
M8 x 1	6.200	5.00	7.00	150.00	11.00	35.00	8,025	OH2	2,630
M10 x 1	7.000	5.50	9.00	150.00	11.00	35.00	10,025	OH2	2,920
M10 x 1.25	7.000	5.50	8.80	150.00	14.00	39.00	10,026	OH2	2,840
M12 x 1	8.500	6.50	11.00	150.00	11.00	40.00	12,025	OH2	3,080
M12 x 1.25	8.500	6.50	10.80	150.00	15.00	40.00	12,026	OH2	3,120
M12 x 1.5	8.500	6.50	10.50	150.00	15.00	40.00	12,027	OH2	3,040
M14 x 1.5	10.500	8.00	12.50	150.00	15.00	40.00	14,027	OH2	3,370
M16 x 1.5	12.500	10.00	14.50	150.00	15.00	44.00	16,027	OH2	3,540
M20 x 1.5	15.000	12.00	18.50	200.00	16.00	44.00	20,027	OH2	4,730