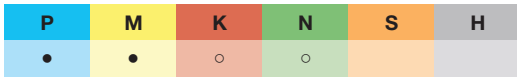




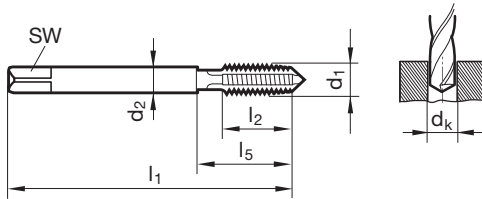
Taps for UNC threads

英制粗牙 UNC 通孔用



Tool material	HSS-E
Surface	○
Type	N
Form	B
Cutting direction	right-hand

1/2- 13 (含)以上為 4刃
、以下尺寸皆為 3刃



Company std.	編號	4465
--------------	----	------

d1	d2	SW	dk	l1	l2	l5	Code	Tolerance	價格
	mm	mm	mm	mm	mm	mm	尾碼	公差	
6 - 32	4.000	3.20	2.85	48.00	12.00	21.00	3,505	OH2	490
8 - 32	5.000	4.00	3.50	52.00	12.00	21.00	4,166	OH2	430
10 - 24	5.500	4.50	3.90	60.00	14.00	25.00	4,826	OH2	470
12 - 24	5.500	4.50	4.50	60.00	16.00	25.00	5,486	OH2	510
1/4 - 20	6.000	4.50	5.10	62.00	16.00	29.00	6,350	OH3	510
5/16 - 18	6.100	5.00	6.60	70.00	18.00	37.00	7,938	OH3	600
3/8 - 16	7.000	5.50	8.00	75.00	20.00	41.00	9,525	OH3	660
7/16 - 14	8.000	6.00	9.40	80.00	22.00	48.00	11,113	OH3	1,340
1/2 - 13	9.000	7.00	10.80	85.00	25.00	48.00	12,700	OH3	1,600
9/16 - 12	10.500	8.00	12.20	90.00	28.00	48.00	14,288	OH3	2,140
5/8 - 11	12.000	9.00	13.50	95.00	30.00	52.00	15,875	OH3	2,220
3/4 - 10	14.000	11.00	16.50	105.00	33.00	58.00	19,050	OH3	3,040
7/8 - 9	17.000	13.00	19.50	115.00	35.00	63.00	22,225	OH4	4,520
1 - 8	20.000	15.00	22.25	125.00	38.00	68.00	25,400	OH4	6,290



Taps for UNC threads

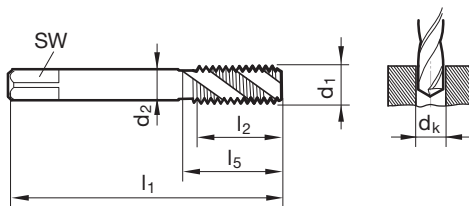
英制粗牙 UNC 盲孔用



Tool material	HSS-E
Surface	○
Type	N R40
Form	C
Cutting direction	right-hand

P	M	K	N	S	H
●	○	○	○		

5/8- 11 (含)以上為 4 刃
、以下尺寸皆為 3 刃



Company std.

編號

4454

d1	d2	SW	dk	l1	l2	l5	Code	Tolerance	價格
	mm	mm	mm	mm	mm	mm	尾碼	公差	
2 - 56	3.000	2.50	1.85	42.00	5.00	21.00	2,184	OH1	630
4 - 40	3.000	2.50	2.35	44.00	7.00	21.00	2,845	OH1	490
5 - 40	4.000	3.20	2.65	46.00	7.00	21.00	3,175	OH1	430
6 - 32	4.000	3.20	2.85	48.00	8.00	21.00	3,505	OH2	410
8 - 32	5.000	4.00	3.50	52.00	8.00	21.00	4,166	OH2	450
10 - 24	5.500	4.50	3.90	60.00	11.00	25.00	4,826	OH2	490
12 - 24	5.500	4.50	4.50	60.00	11.00	25.00	5,486	OH2	490
1/4 - 20	6.000	4.50	5.10	62.00	13.00	29.00	6,350	OH3	510
5/16 - 18	6.100	5.00	6.60	70.00	14.00	37.00	7,938	OH3	600
3/8 - 16	7.000	5.50	8.00	75.00	16.00	41.00	9,525	OH3	620
7/16 - 14	8.000	6.00	9.40	80.00	18.00	48.00	11,113	OH3	1,340
1/2 - 13	9.000	7.00	10.80	85.00	20.00	48.00	12,700	OH3	1,600
9/16 - 12	10.500	8.00	12.20	90.00	21.00	48.00	14,288	OH3	2,200
5/8 - 11	12.000	9.00	13.50	95.00	24.00	52.00	15,875	OH3	2,240
3/4 - 10	14.000	11.00	16.50	105.00	25.00	58.00	19,050	OH3	3,120
7/8 - 9	17.000	13.00	19.50	115.00	28.00	63.00	22,225	OH4	4,770
1 - 8	20.000	15.00	22.25	125.00	32.00	68.00	25,400	OH4	6,450